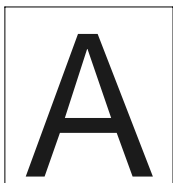


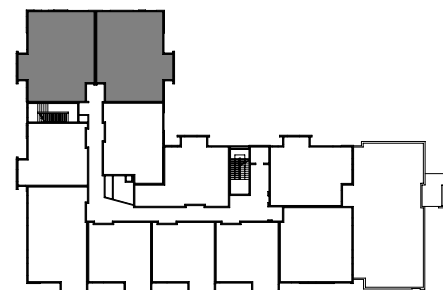
# JACKSON ST. ARTIST LOFTS



04/10/08

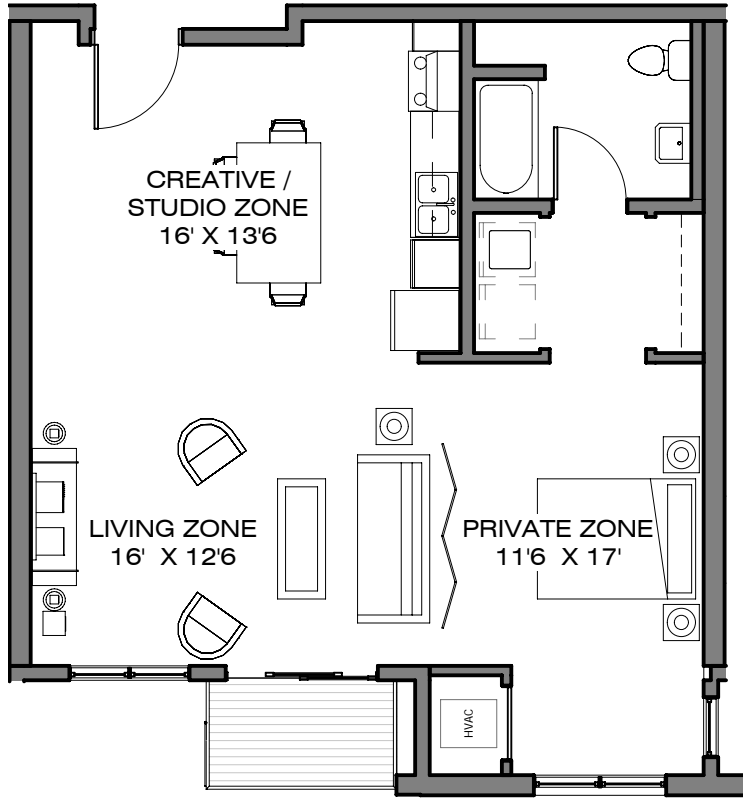


Interior Area: 1230 SF  
 Exterior Area: 36 SF  
 Total Area: 1266 SF



Key Plan

Unit dimensions and square footages are approximate and may vary.  
 \*Total unit areas includes interior space, balcony, and storage.



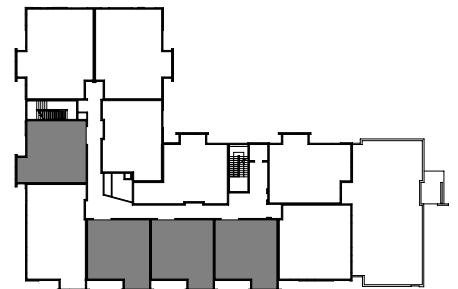
# JACKSON ST. ARTIST LOFTS



04/10/08

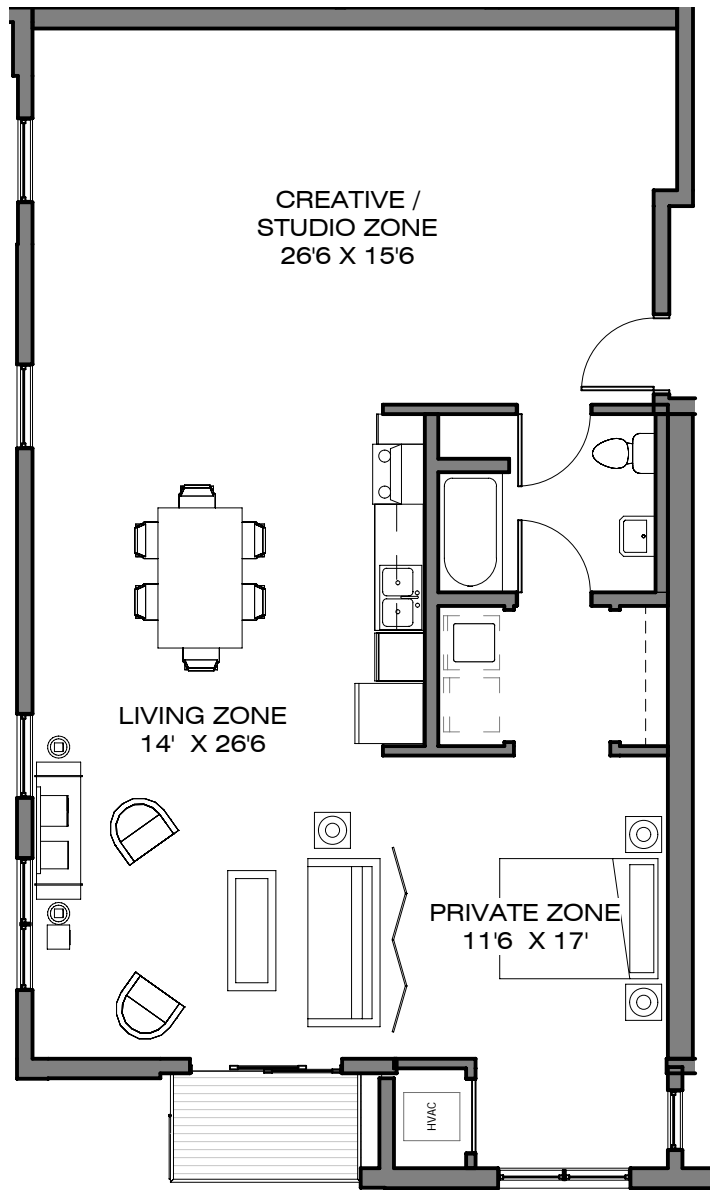
**B**

Interior Area: 794 SF  
 Exterior Area: 36 SF  
 Total SF: 830 SF



Key Plan

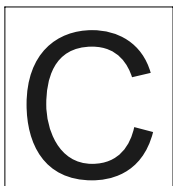
Unit dimensions and square footages are approximate and may vary.  
 \*Total unit areas includes interior space, balcony, and storage.



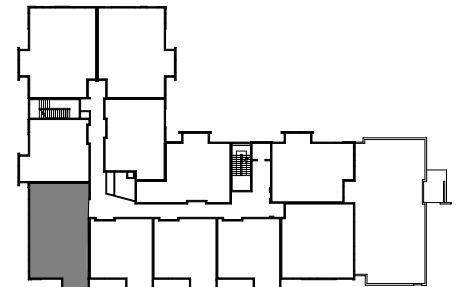
# JACKSON ST. ARTIST LOFTS



04/10/08

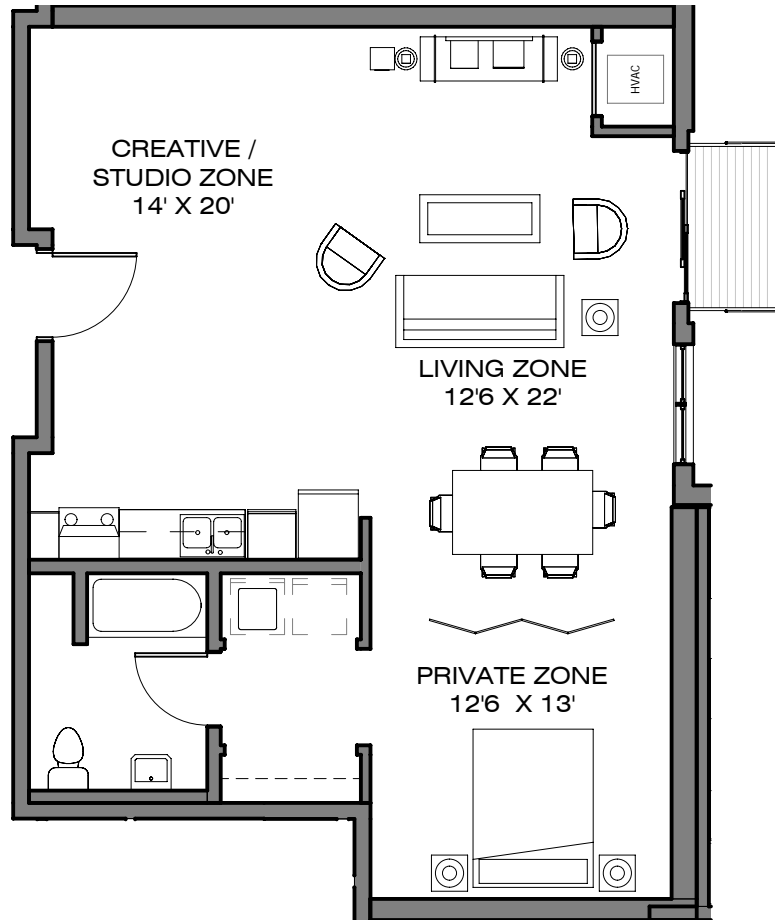


Interior Area: 1182 SF  
Exterior Area: 36 SF  
Total Area: 1218 SF



Key Plan

Unit dimensions and square footages are approximate and may vary.  
\*Total unit areas includes interior space, balcony, and storage.



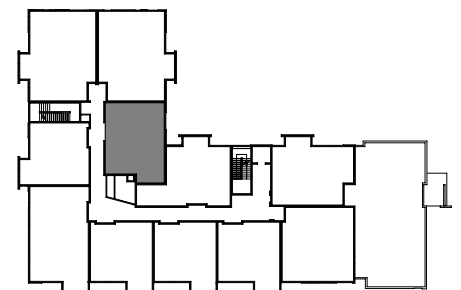
# JACKSON ST. ARTIST LOFTS



**D**

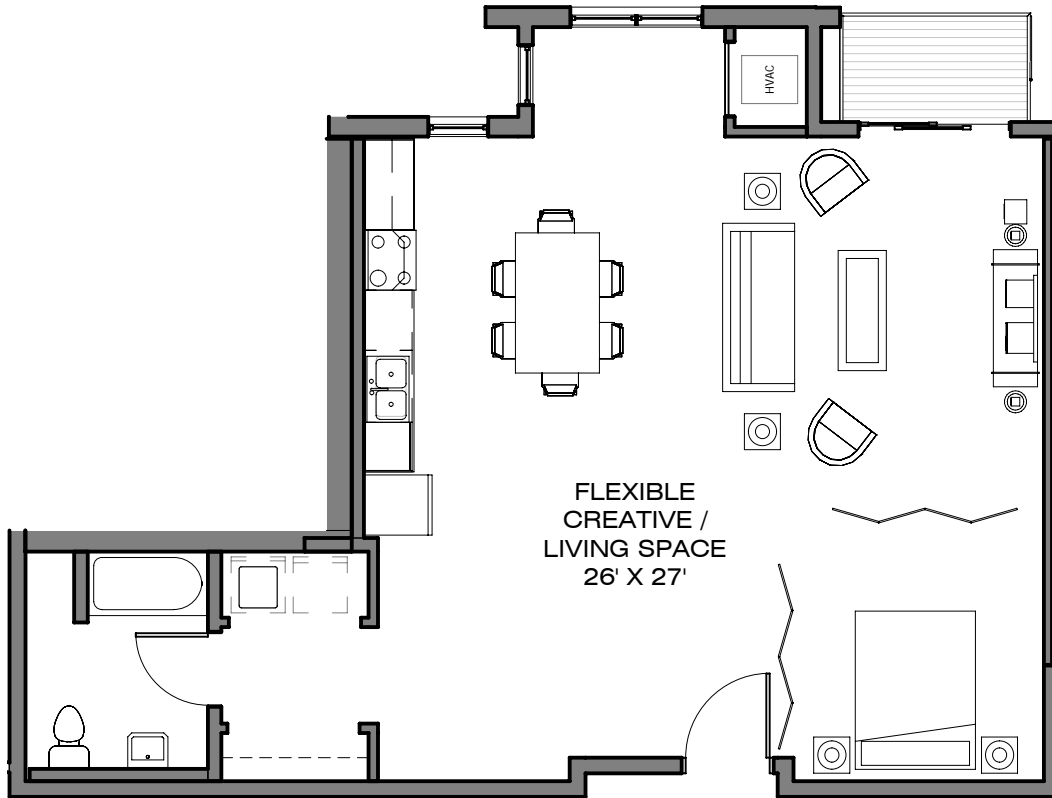
Interior Area: 906 SF  
 Exterior Area: 36 SF  
 Total Area: 942 SF

04/10/08

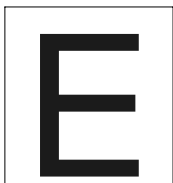


Key Plan

Unit dimensions and square footages are approximate and may vary.  
 \*Total unit areas includes interior space, balcony, and storage.

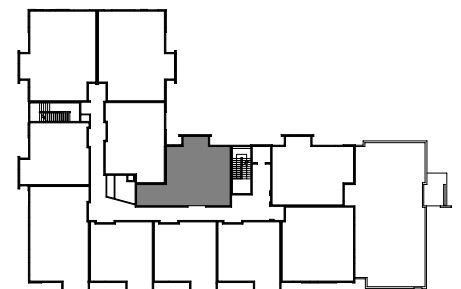


# JACKSON ST. ARTIST LOFTS



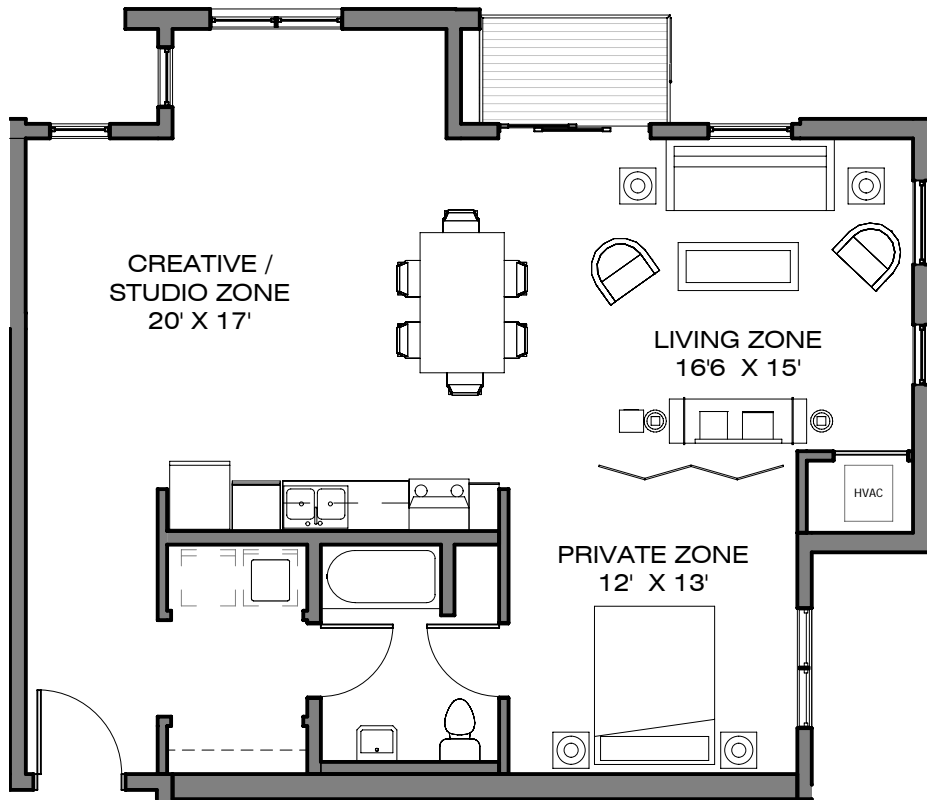
Interior Area: 951 SF  
 Exterior Area: 36 SF  
 Total Area: 987 SF

04/10/08



Key Plan

Unit dimensions and square footages are approximate and may vary.  
 \*Total unit areas includes interior space, balcony, and storage.

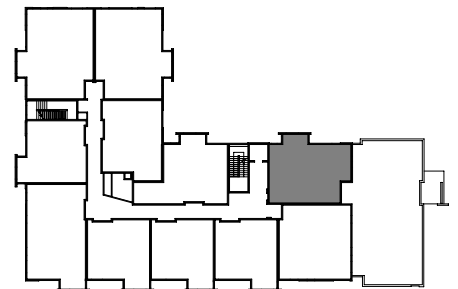


# JACKSON ST. ARTIST LOFTS



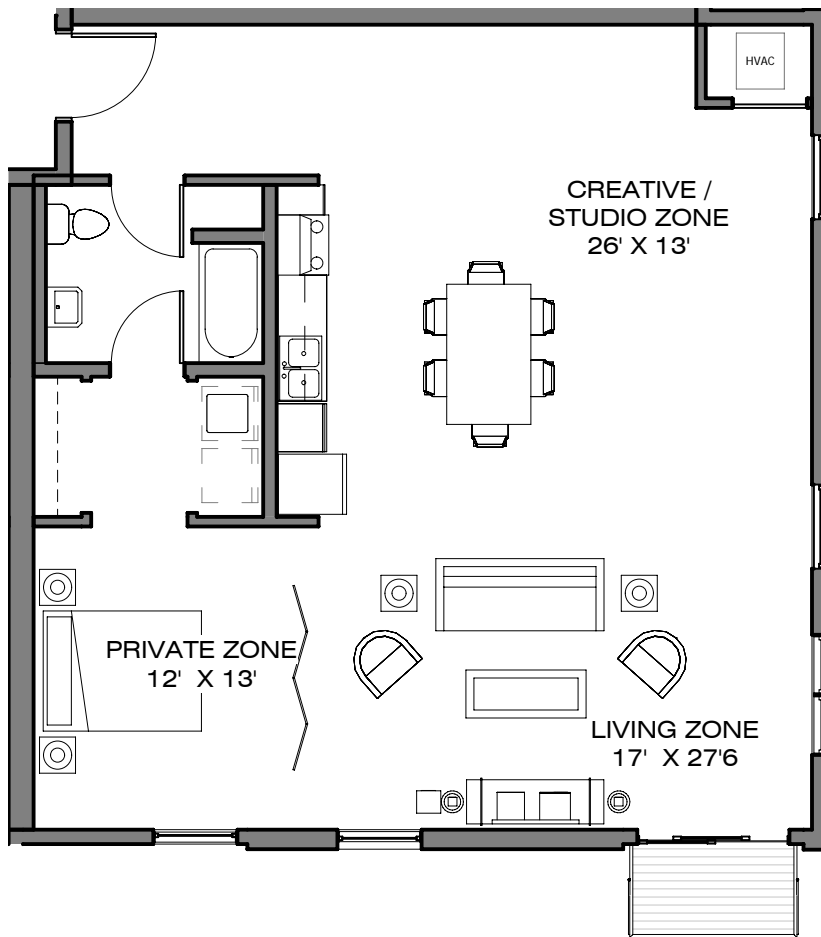
Interior Area: 979 SF  
 Exterior Area: 36 SF  
 Total Area: 1015 SF

04/10/08



Key Plan

Unit dimensions and square footages are approximate and may vary.  
 \*Total unit areas includes interior space, balcony, and storage.

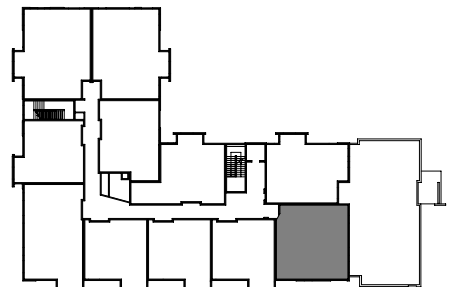


# JACKSON ST. ARTIST LOFTS



Interior Area: 1074 SF  
 Exterior Area: 36 SF  
 Total Area: 1110 SF

04/10/08



Key Plan

Unit dimensions and square footages are approximate and may vary.  
 \*Total unit areas includes interior space, balcony, and storage.